



Installation Instructions

Product: Pro+ 14" Front Spindle

Instruction Part Number: 6000443

Vehicle

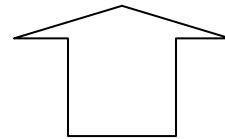
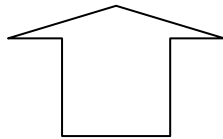
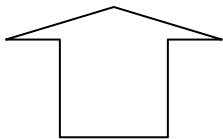
Revision Date: 26 July 2013

Make: Scion/Subaru

Model: FRS/BRZ

Year(s): 2012

ATTENTION: Read this before going any farther! Returns will not be accepted for ANY installed PART or ASSEMBLY. Use great care to prevent cosmetic damage when performing wheel fit check. In the event that a product must be returned, please contact Baer Customer Service for a RMA Number.



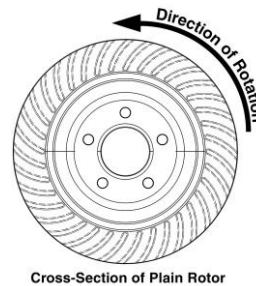
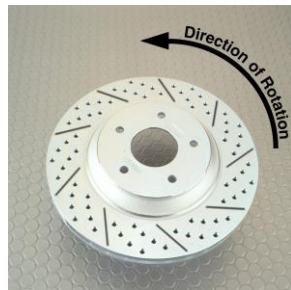
Notices – Read and Follow BEFORE ATTEMPTING INSTALLATION

- All installations require proper safety procedures and protective eyewear.
- All installations assume basic mechanical skill and a factory service manual for the vehicle on which the installation is to be performed.
- All references to the “left” side of the vehicle correlate to the driver’s side of the vehicle.
- Any installation requiring you to remove a wheel or gain access under the vehicle requires use of jack stands appropriate to the weight of the vehicle. In all cases, jack stands rated for a minimum of 2-tons is recommended.
- A selection of hand tools sufficient to engage in the installation of these products is assumed, and is the responsibility of the installer to have in his/her possession prior to beginning this installation. All installations, which require removal of hydraulic hoses and/or bleeding of the brakes, require appropriate fitting/line wrenches, safety catch can, and protective eyewear. Other than these items, if unique or special tools are required they will be stated appropriately in the installation step.
- ALWAYS CONFIRM WHEEL FIT PRIOR TO BEGINNING INSTALLATION OF ANY BRAKE SYSTEM OR “UPSIZED” ROTOR UPGRADE! In addition to checking wheel fitment (available online at www.baer.com), always place the actual corner assembly or a combination of the caliper assembly onto the rotor, and into the actual wheel. This procedure will reconfirm proper clearance between the caliper and the wheel before proceeding with the actual installation.
- Returns will **not** be accepted for systems that have been partially or completely installed. Use extreme care when checking wheel fitment to prevent any cosmetic damage.

BAER Your Complete Performance Brake Supplier!



- When installing rotors on any Baer Products be sure to follow the direction of rotation indicated on the rotor hat area with either an arrow, or an “L” for left, or an “R” for right, or both. “L” or left always indicates the driver’s side of US spec vehicles. Images shown are “L” left rotors:



- A proper professional wheel alignment is required for any system requiring replacement of the front spindles, or tie rod ends. Follow factory prescribed procedures and specifications unless otherwise indicated.
- At all times stop the installation if anything is unclear, or the parts require force to install. Consult directly with Baer Technical Staff in such instances to confirm details. Please have these instructions, as well as the part number machined on the component that is proving difficult to install, as well as the make, model, and year (date of vehicle production is preferred) of your vehicle available when you call. Baer’s Tech Staff is available from 8:30-am to 5-pm Mountain Standard Time (Arizona does not observe Daylight Savings Time) at 602 233-1411 Monday through Friday.

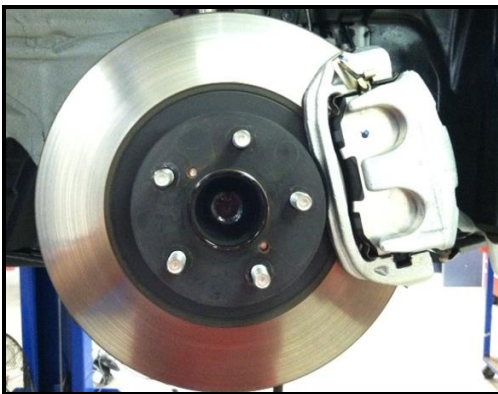
BAER Your Complete Performance Brake Supplier!

INSTALLATION:

1. Using a 10mm line wrench, carefully loosen the brake line at the frame rail. **Installation Tip:** Use Liquid Wrench or penetrating oil if necessary. Cap the hard line with supplied vinyl cap. See photo below for reference:



2. Remove the clip holding the brake hose to the bracket with a pair of pliers.
3. Remove the caliper bolts from the spindle and slide the caliper with the hose attached off the rotor.
4. Remove the rotor from the spindle. ****Note:** The Pro+ System does not require removal of dust shields from the front of the vehicle. See photos below of before-and-after removal of the rotor and caliper (Passenger side):



Before



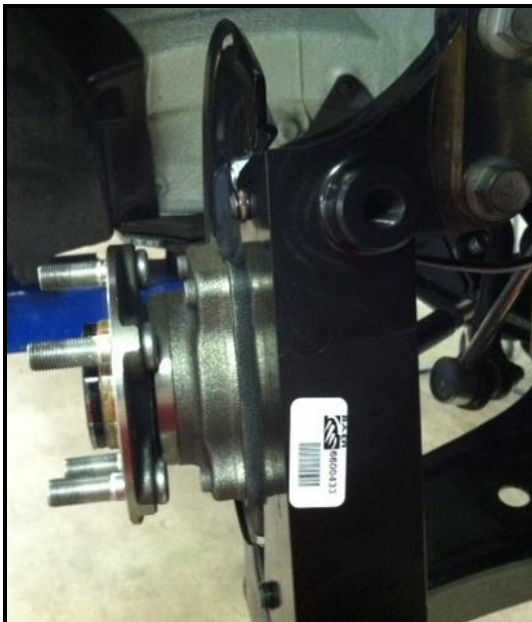
After

BAER Your Complete Performance Brake Supplier!

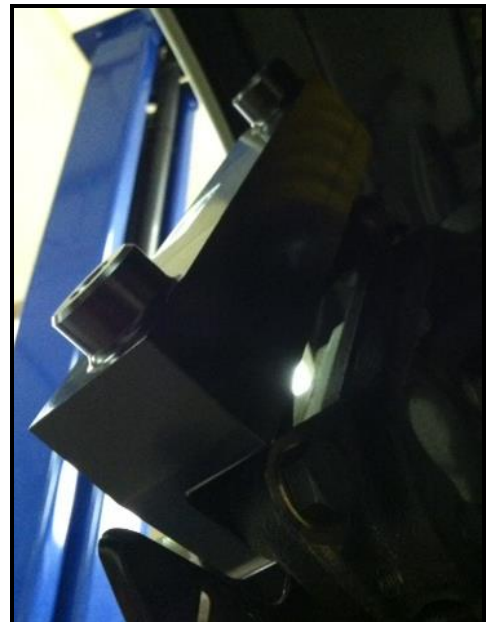
5. Using the supplied M12-1.75 X 35mm bolts and washers, install the base bracket as shown in the below photos. Torque these bolts to 83 ft-lbs. ****Note:** Flat face of bracket faces outboard



Base bracket (front view)



Base bracket (top view)

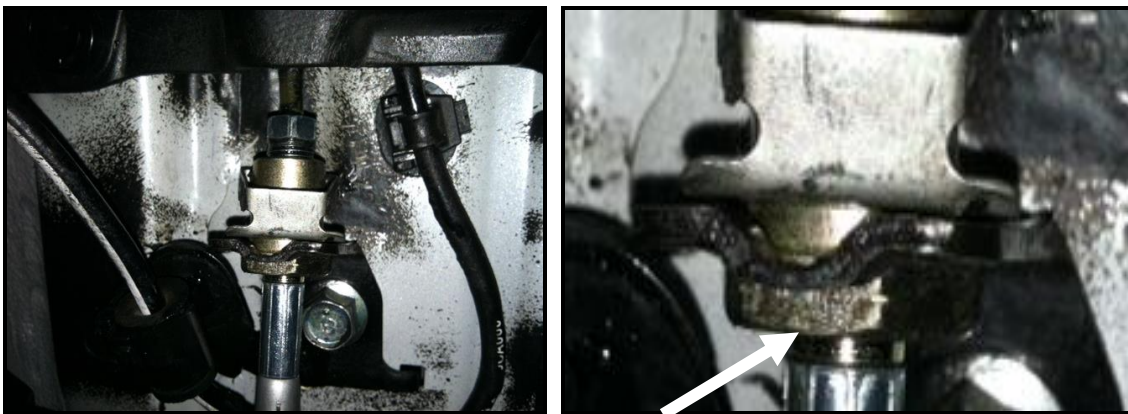


Base bracket (3/4 rear view)

BAER Your Complete Performance Brake Supplier!

6. Install the correct side rotor and secure with three lug nuts and a washers to prevent scratching the rotor hat.
7. With pads in place, install the correct side caliper using the supplied M12-1.75 X 45mm bolts. Torque these bolts to 75 ft·lbs.
8. Install the steel braid banjo hose end with one copper washer on each side of the banjo fitting. Finger tighten the banjo bolt. Connect the hose to the hardline at the frame and install the hose lock. ****IMPORTANT: Position the hose to avoid interference with the wheel and suspension components through the entire range of motion.** Tighten fitting and banjo bolt to 15-20 ft·lbs.

****Note:** One, (1) 3/8" Super 9 Washer will need to be placed onto the brake hose mount. The base of the frame rail for the brake hose will need to be slightly ground away to fit the hose clip. See photos below for reference:

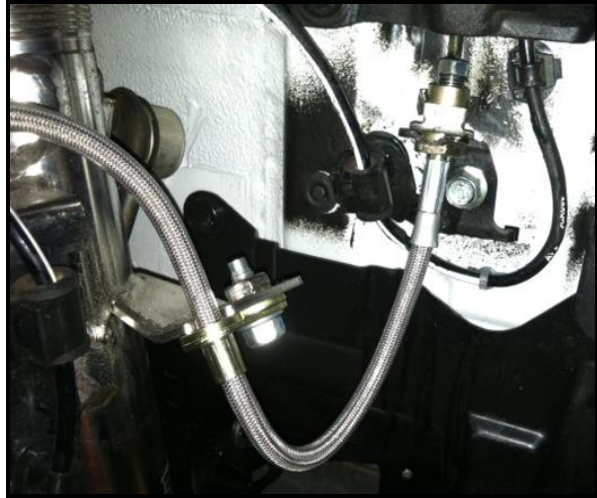


Grind away small amount of the frame rail base so that it can allow the brake hose clip to fit

BAER Your Complete Performance Brake Supplier!



Banjo hose correctly installed



**Completion of brake hose install
(no interference with suspension)**



9. Repeat these steps for the other side and recheck all attachment points and fittings.

Refer to Bleeding, and Pad Bedding & Rotor Seasoning Procedures contained on a separate sheet, or on www.baer.com

For service components and replacement parts contact your Baer Brake Systems Tech Representative.