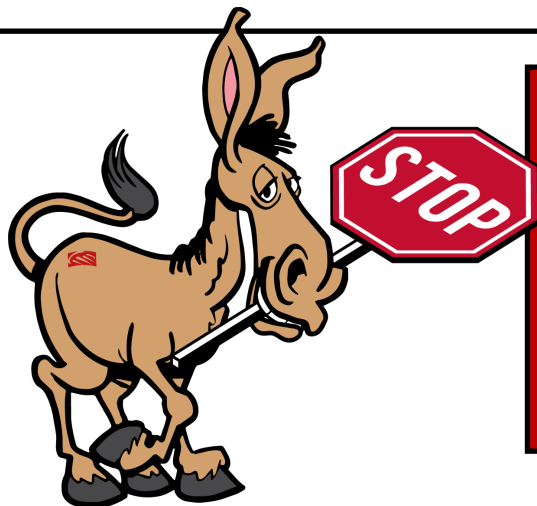




INSTALLATION INSTRUCTIONS

PART NUMBER: 6000759
VEHICLE MAKE: FORD
MODEL: F-150 2WD / 4WD
YEARS: 2010-2020

PRODUCT: ES1
INSTRUCTION REVISION: REVISION B
REVISION DATE: 13 DECEMBER, 2023



READ BEFORE CONTINUING!

Returns will not be accepted for ANY installed PART or ASSEMBLY. Use great care in preventing cosmetic damage when performing wheel fit check. If a product must be returned, please contact Baer customer service for an RMA number.

The recipient of this product indemnifies Baer Inc. for all liabilities or losses incurred in connection with the recipient modifying or altering Baer Inc. product during installation.

Notices – Read and Follow BEFORE ATTEMPTING INSTALLATION

- All installations require proper safety procedures and protective eyewear.
- All installations assume basic mechanical skill and a factory service manual for the vehicle on which the installation is to be performed.
- All references to the “left” side of the vehicle correlate to the driver’s side of the vehicle.
- Any installation requiring you to remove a wheel or gain access under the vehicle requires use of jack stands appropriate to the weight of the vehicle. In all cases, jack stands rated for a minimum of 2-tons is recommended.
- A selection of hand tools sufficient to engage in the installation of these products is assumed and is the responsibility of the installer to have in his/her possession prior to beginning this installation. All installations, which require removal of hydraulic hoses and/or bleeding of the brakes, require appropriate fitting/line wrenches, safety catch can, and protective eyewear. Other than these items, if unique or special tools are required, they will be stated appropriately in the installation step.
- **ALWAYS CONFIRM WHEEL FIT BEFORE BEGINNING INSTALLATION OF ANY BRAKE SYSTEM OR “UPSIZED” ROTOR UPGRADE!** In addition to checking wheel fitment of this system with the wheel fitment template (available online at www.Baer.com), always place the actual corner assembly or a combination of the caliper assembly on the rotor, and into the actual wheel with great care to prevent cosmetic damage. This procedure will reconfirm proper clearance between the caliper and the wheel before proceeding with the actual installation.
- Returns will **not** be accepted for systems that have been partially or completely installed. **Use extreme care when checking wheel fitment to prevent any cosmetic damage of brake components.** Wheel fitment should be verified before installation using a wheel fitment template supplied at www.Baer.com
- When installing new Baer rotor, be sure to follow the direction of rotation indicated on the rotor hat area with either an arrow, an “L” for left, or an “R” for right, or both. “L” always indicates the rotor for the driver side of US spec vehicles. Follow the rotor installation and rotation instructions included in the promo pack (P/N 6020101) included with your system when installing rotors. Failure to properly install rotors will not allow for proper function of the brake system and will cause heat related fatigue and failure.
- A professional wheel alignment is required for any system requiring the replacement of the front spindles or tie rod ends. Follow factory prescribed procedures and specifications unless otherwise indicated.



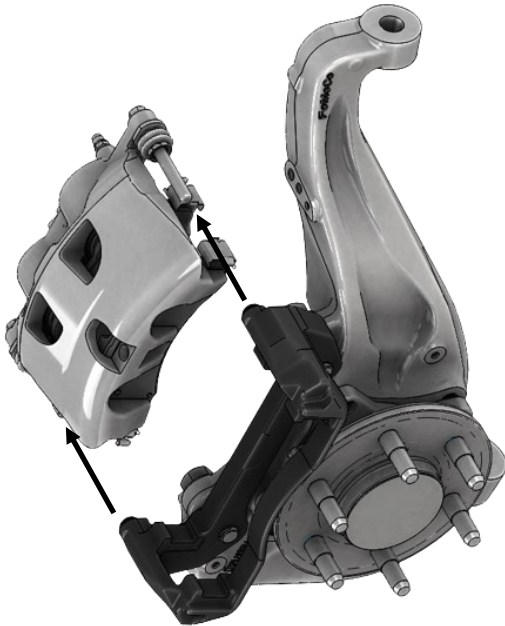
- Contact Baer technical support at 602.233.1411 if you are unsure that the brake system you ordered will work for your application based on the axle standoff you measured.
- Note: Baer recommends taking photos of the brake system before disassembly and during each step of the disassembly process. Photos may allow technical support to better assist given any necessary troubleshooting.**
- If anything becomes unclear or any parts require force to install at any point during the installation, stop immediately and consult directly with Baer technical staff. Please have these instructions and the part number of the components that is/are proving difficult to install. Please provide technical staff with the make, model, and year (date of vehicle production is preferred) of your vehicle. Baer's technical staff is available by phone (602.233.1411) or email (ContactUs@Baer.com) from 8:30 AM - 5:00 PM MST (Mountain Standard Time) Monday - Friday (Arizona does not observe Daylight Savings Time).

REMOVAL OF EXISTING BRAKE COMPONENTS

1. Remove the two bolts securing the caliper anchor to the knuckle. Save these as they will be used to secure the Baer EradiSpeed F-150 anchor to the knuckle.
2. Remove the caliper assembly from the rotor and suspend in the wheel well. **DO NOT** allow the caliper to hang from the brake hose, this can damage the hose. **The brake hose does NOT need to be disconnected from the hard line OR the caliper.**
3. Remove the rotor from the wheel hub. Inspect the mounting face of the wheel hub for debris. Any debris present on the mounting face of the wheel hub may affect fitment of the new brake components. Clean the mounting face with a non-abrasive material if debris is present.
4. Remove the factory dust shield from the knuckle as it will interfere with the new rotor included in this system.

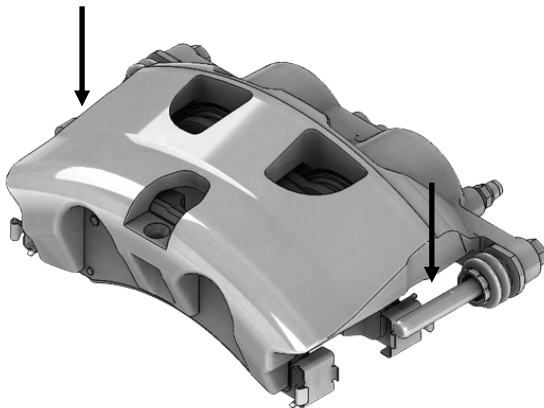
BAER ERADISPEED F-150 ANCHOR ASSEMBLY

1. Carefully remove the caliper from the original anchor by simply pulling the caliper body (with the sliding pins installed) from the original anchor. Make sure not to damage the rubber boots installed on the sliding pins of the caliper. It is recommended to temporarily mount the caliper assembly to the knuckle to aid in removing the caliper from the anchor. Remove the original anchor from the knuckle once the caliper has been removed. It is recommended to replace the brake pads at this point. Baer offers brake pads dependent on specific application. Brake pads can be ordered directly from



CAREFULLY REMOVE THE CALIPER FROM THE ORIGINAL ANCHOR BY SIMPLY PULLING THE CALIPER BODY (WITH THE SLIDING PINS INSTALLED) FROM THE ORIGINAL ANCHOR. MAKE SURE NOT TO DAMAGE THE RUBBER BOOTS INSTALLED ON THE SLIDING PINS OF THE CALIPER. IT IS RECOMMENDED TO TEMPORARILY MOUNT THE CALIPER ASSEMBLY TO THE KNUCKLE TO AID IN REMOVING THE CALIPER FROM THE ANCHOR. (RIGHT KNUCKLE SHOWN) (BRAKE HOSE NOT SHOWN IN PHOTO, DISCONNECTION OF ORIGINAL BRAKE HOSE NOT REQUIRED)

Baer by following this link: <https://baersport.com/Baer-Sport-Pads/>. Pull the original pad clips from the anchor, these will be re-used in the new anchor.



APPLY A SMALL AMOUNT OF CALIPER PIN GREASE TO EACH OF THE SLIDING PINS ON THE CALIPER. (BRAKE HOSE NOT SHOWN IN PHOTO, DISCONNECTION OF ORIGINAL BRAKE HOSE NOT REQUIRED)

BAER ERADISPEED F-150 ANCHOR ASSEMBLY CONTINUED

3. Place the pad clips from the original anchor into the new Baer EradiSpeed F-150 anchor and install the caliper into the new anchor via the sliding pin holes.
4. Slide the end of the rubber boots onto the lip of the sliding pin holes in the Baer EradiSpeed F-150 anchor.
5. Push the caliper in and out by hand on the sliding pins to properly lubricate the sliding pin holes and verify that there is no interference between any components.



PLACE THE PAD CLIPS FROM THE ORIGINAL ANCHOR INTO THE NEW BAER ERADISPEED F-150 ANCHOR AND INSTALL THE CALIPER INTO THE NEW ANCHOR VIA THE SLIDING PIN HOLES. SLIDE THE END OF THE RUBBER BOOTS ONTO THE LIP OF THE SLIDING PIN HOLES IN THE BAER ERADISPEED F-150 ANCHOR. (BRAKE HOSE NOT SHOWN IN PHOTO, DISCONNECTION OF ORIGINAL BRAKE HOSE NOT REQUIRED)

ROTOR INSTALLATION

1. Install the correct side rotor to the wheel hub mounting face. **REFER TO THE ROTOR INSTALLATION AND ROTATION INSTRUCTION INCLUDED IN THE PROMO PACKET (P/N 6020101) SUPPLIED WITH THIS SYSTEM TO ENSURE THE CORRECT ROTOR IS INSTALLED.**
2. Temporarily secure the rotor to the wheel hub with three lug nuts and washers to prevent scratching the rotor. These will be removed before re-installing the wheels.



INSTALL THE CORRECT SIDE ROTOR TO THE WHEEL HUB MOUNTING FACE. REFER TO THE ROTOR INSTALLATION AND ROTATION INSTRUCTION INCLUDED IN THE PROMO PACKET (P/N 6020101) SUPPLIED WITH THIS SYSTEM TO ENSURE THE CORRECT ROTOR IS INSTALLED. TEMPORARILY SECURE THE ROTOR TO THE WHEEL HUB WITH THREE LUG NUTS AND WASHERS TO PREVENT SCRATCHING THE ROTOR. (RIGHT (PASSENGER) ROTOR AND KNUCKLE SHOWN) (BRAKE HOSE NOT SHOWN IN PHOTO, DISCONNECTION OF ORIGINAL BRAKE HOSE NOT REQUIRED)

**CALIPER INSTALLATION**

1. Install the caliper assembly with the new Baer EradiSpeed F-150 anchor to the outboard side of the mounting ears on the knuckle, same as the original. Use the original fasteners to secure the caliper assembly to the knuckle.
2. Torque the fasteners to 136 ft-lbs. to secure the caliper assembly to the knuckle.



INSTALL THE CALIPER ASSEMBLY WITH THE NEW BAER ERADISPEED F-150 ANCHOR TO THE OUTBOARD SIDE OF THE MOUNTING EARS ON THE KNUCKLE, SAME AS THE ORIGINAL. USE THE ORIGINAL FASTENERS TO SECURE THE CALIPER ASSEMBLY TO THE KNUCKLE. TORQUE THE FASTENERS TO 136 FT-LBS. TO SECURE THE CALIPER ASSEMBLY TO THE KNUCKLE. (BRAKE HOSE NOT SHOWN IN PHOTO, DISCONNECTION OF ORIGINAL BRAKE HOSE NOT REQUIRED)



Refer to Pad Bedding, and Rotor Seasoning Procedures contained within the promo pack (P/N 6020101) provided with this system. For service components and replacement parts, contact a Baer Systems Technical Representative or visit the link below.

<https://baer.com/System-Parts-Tools/>

We at Baer understand there are many options when it comes to performance brake suppliers and appreciate your business. Great pride and care were taken in designing, assembling, and packaging all components of this brake system.

Thank you for your purchase.